



**NORTH CENTRAL TEXAS COUNCIL OF GOVERNMENTS  
NCTCOG STORMWATER QUALITY MONITORING PROJECT  
NCTCOG PROJECT ID 100024283  
TEXAS DEPARTMENT OF TRANSPORTATION – DALLAS DISTRICT 2012**

**Sample Collection Report  
Event Date: April 8, 2012**

Prairie Creek Storm Summary

Storm description: An area of showers and thunderstorms developed throughout the vicinity and proceeded to the southeast.

Rain event start time and date: 1440 4/8/12    Rainfall total:                    0.17 in  
Rain event end time and date: 1745 4/8/12    Peak 1-hr rate:                    0.07 in/hr

Rainfall station:                    TX1201  
Antecedent dry period:            115 hrs

Comments: The rainfall end time and date are a result of the sampling equipment being removed at the conclusion of the sampling activities.

TX 1201

Station location description: Prairie Creek and Highway 175

Flow start time and date:            1530 4/8/12    Time first aliquot collected: 1533  
Flow end time and date:            1745 4/8/12    Time last aliquot collected: 1740

Peak depth:                    2.6 ft                    Aliquots collected:            6  
Average depth:                1.4 ft                    Total sample volume:        3.5 gal

Manual Aliquots Collected:    1533 4/8/12  
    1540 4/8/12  
    1610 4/8/12  
    1640 4/8/12  
    1710 4/8/12  
    1740 4/8/12

Comments: Due to a malfunction with the automatic sampler the sample was collected manually. The flow end time and date are a result of the sampling equipment being removed at the conclusion of the sampling activities.

TX 1202

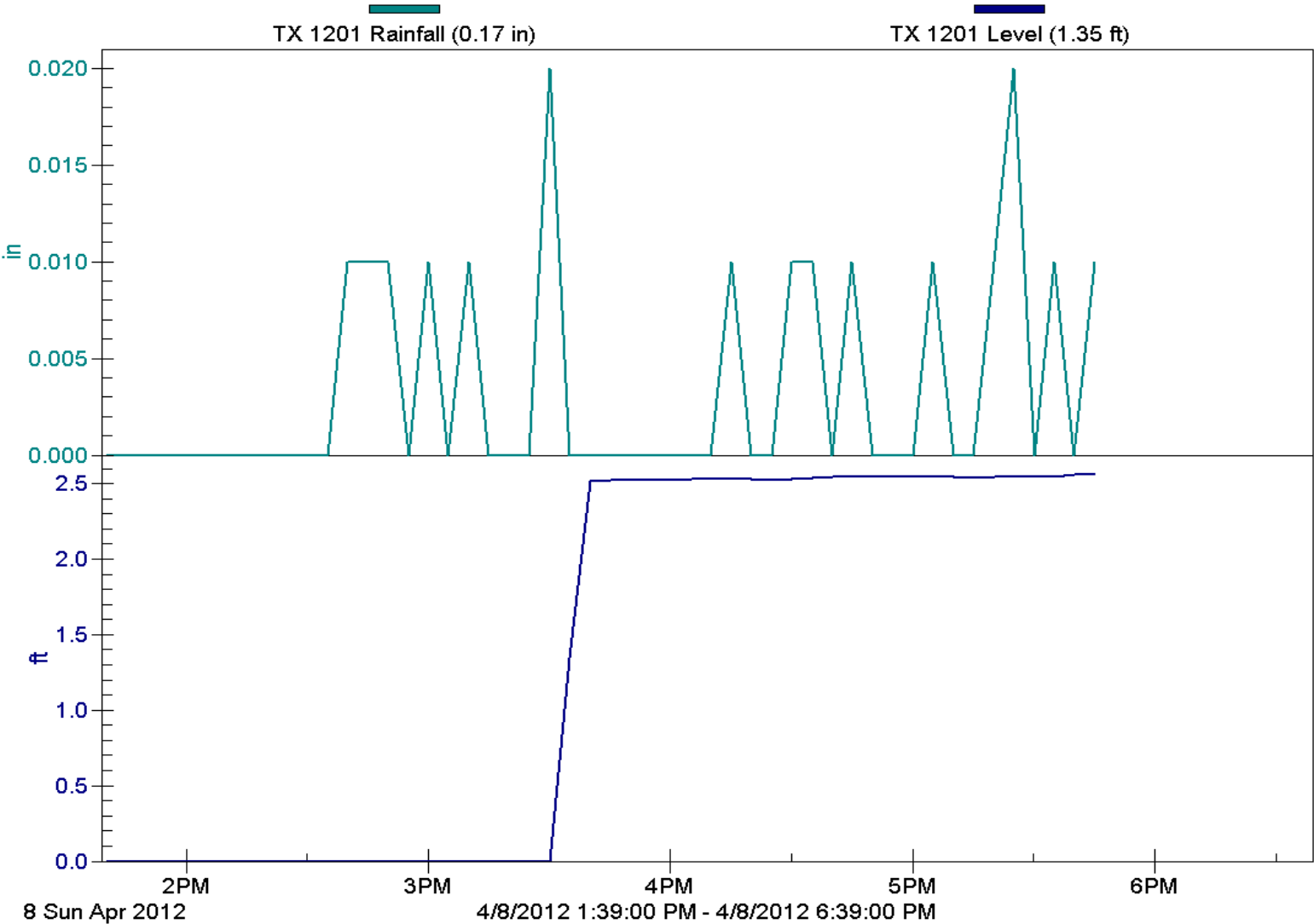
Station location description: Highway 67 Between Main and Danieldale

Comments: A successful sample was collected at this site for this quarter on April 3, 2012.

Prepared By: Sue Shartzler\_\_\_\_\_ Date: May 7, 2012\_\_\_\_\_

Checked By: Chad Richards\_\_\_\_\_ Date: May 7, 2012\_\_\_\_\_

NCTCOG TEXAS DEPARTMENT OF TRANSPORTATION  
TX 1201



Analytical Results Summary  
 NCTCOG Stormwater Quality Monitoring Project  
 NCTCOG Project 100024283  
 TEXAS DEPARTMENT OF TRANSPORTATION 2012

Storm Event: 04/08/12 Project Number: 100024283	TxDOT 1201	TxDOT 1202	
PARAMETER NAME	COMPOSITE	COMPOSITE	UNIT*
Total Dissolved Solids (TDS)	416	NST	mg/L
Total Suspended Solids (TSS)	6.000	NST	mg/L
Biochemical Oxygen Demand	3.32	NST	mg/L
Chemical Oxygen Demand	5.00	NST	mg/L
Total Nitrogen	10.8	NST	mg/L
Phosphorus, Dissolved	0.04	NST	mg/L
Carbaryl	<0.060 U	NST	µg/L
Arsenic, Total	0.003 J	NST	mg/L
Copper, Total	0.037	NST	mg/L
Lead, Total	0.004 J	NST	mg/L
Zinc, Total	0.043 J	NST	mg/L
Chromium, Total	<0.003 U	NST	mg/L
Phosphorus, Total	<0.05 U	NST	mg/L
PARAMETER NAME	GRAB	GRAB	UNIT
Oil & Grease(HEM)	1.50 J	NST	mg/L
pH (field)	8.1	NST	su
Ambient Air Temperature (field)	63	NST	°F
Water Temperature (field)	70	NST	°F
E. Coli	900	NST	col/100 mL
Specific Conductivity	654	NST	µS/cm
Total Coliforms	40,000	NST	col/100 mL

\* - Reported in mg/L and µg/L. The units mg/L and µg/L are equal to ppm and ppb, respectively.

">" - Not Identified Above the Upper Detection Limit

"<" - Not Identified Below the Lower Detection Limit

J - Positively Identified Below the Lower Detection Limit

NST - No Sample Taken

U - Undetected



**NORTH CENTRAL TEXAS COUNCIL OF GOVERNMENTS  
NCTCOG STORMWATER QUALITY MONITORING PROJECT  
NCTCOG PROJECT ID 100024283  
TEXAS DEPARTMENT OF TRANSPORTATION – DALLAS DISTRICT 2012**

**Sample Collection Report  
Event Date: April 3, 2012**

Ten Mile Headwaters Storm Summary

Storm description: A line of severe thunderstorms moved across the region from the west bringing multiple tornados, hail, and heavy rain.

Rain event start time and date: 1202 4/3/12    Rainfall total:                    0.64 in  
Rain event end time and date: 1635 4/3/12    Peak 1-hr rate:                    0.40 in/hr

Rainfall station:                    City of Dallas 4135  
Antecedent dry period:            292 hrs

Comments: The storm summary was calculated using the data obtained from the City of Dallas Flood Control data, rainfall gauge 4135, Woody Branch at Westmoreland Road ([www.ci.dallas.tx.us/sts](http://www.ci.dallas.tx.us/sts)).

TX 1201

Station location description: Prairie Creek and Highway 175

Comments: Due to hazardous weather conditions, this sample was unable to be collected. Severe hail and tornadoes were in the Metroplex area.

TX 1202

Station location description: Highway 67 Between Main and Daniieldale

Flow start time and date:            1435 4/3/12    Time first aliquot collected: 1443  
Flow end time and date:            Unknown        Time last aliquot collected: 1646

Peak depth:                            2.5 ft            Aliquots collected:                6  
Average depth:                        1.0 ft            Total sample volume:            3.5 gal

Comments: The bubbler tubing was dislodged by the flow. Flow was observed to be rising throughout the sampling routine.

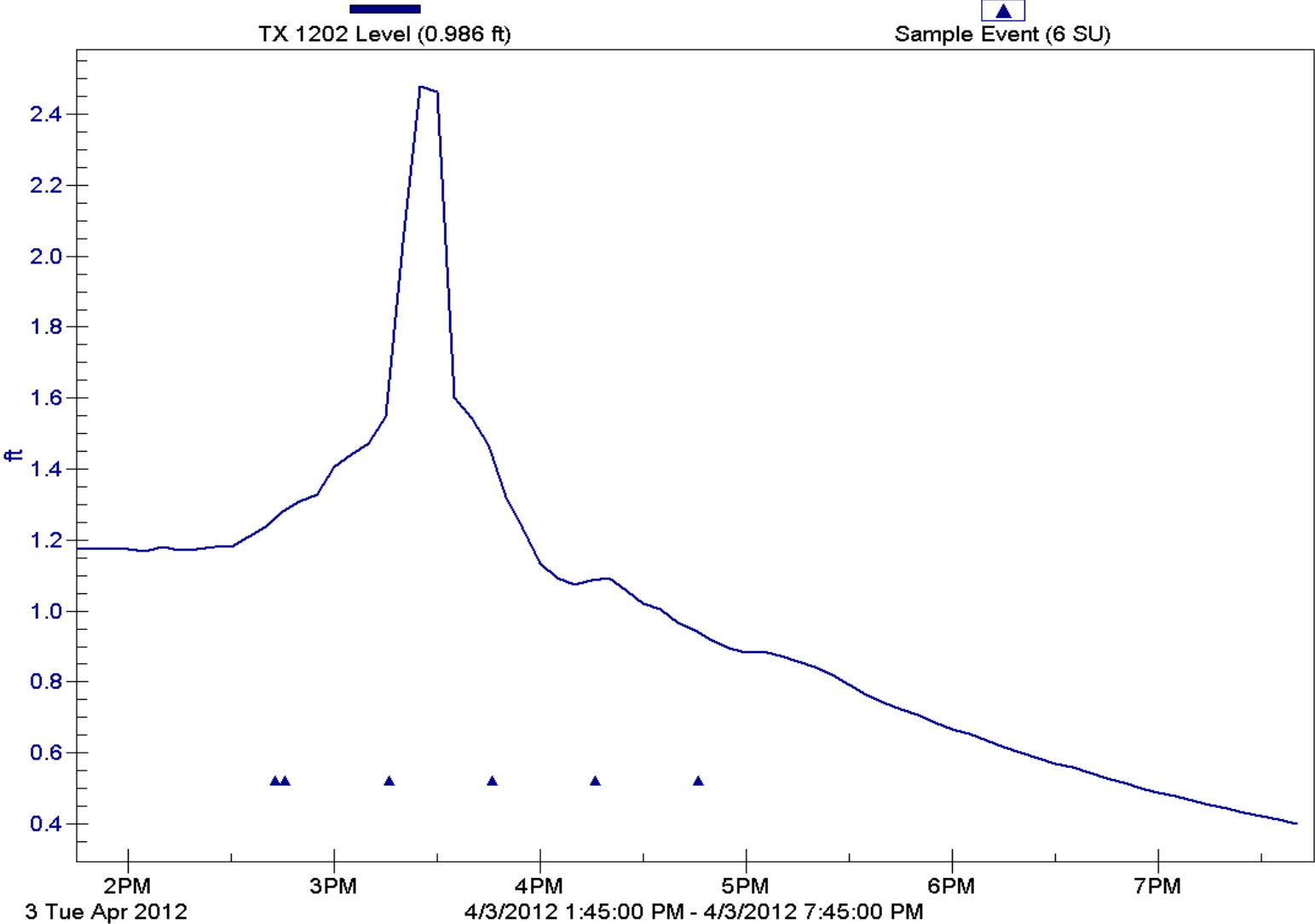
Prepared By: Sue Shartzter

Date: May 10, 2012

Checked By: Chad Richards

Date: May 10, 2012

TX 1202  
Flowlink 5



Analytical Results Summary  
NCTCOG Stormwater Quality Monitoring Project  
NCTCOG Project 100024283  
TEXAS DEPARTMENT OF TRANSPORTATION 2012

Storm Event: 04/03/12 Project Number: 100024283	TxDOT 1201	TxDOT 1202	
PARAMETER NAME	COMPOSITE	COMPOSITE	UNIT*
Total Dissolved Solids (TDS)	NST	312	mg/L
Total Suspended Solids (TSS)	NST	208.0	mg/L
Biochemical Oxygen Demand	NST	18.7	mg/L
Chemical Oxygen Demand	NST	60.0	mg/L
Total Nitrogen	NST	6.28	mg/L
Phosphorus, Dissolved	NST	0.02	mg/L
Carbaryl	NST	<0.060 U	µg/L
Arsenic, Total	NST	<0.002 U	mg/L
Copper, Total	NST	0.033	mg/L
Lead, Total	NST	0.005 J	mg/L
Zinc, Total	NST	0.032 J	mg/L
Chromium, Total	NST	0.003 J	mg/L
Phosphorus, Total	NST	0.05 J	mg/L
PARAMETER NAME	GRAB	GRAB	UNIT
Oil & Grease(HEM)	NST	<1.40 U	mg/L
pH (field)	NST	8.2	su
Ambient Air Temperature (field)	NST	66	°F
Water Temperature (field)	NST	74	°F
E. Coli	NST	600	col/100 mL
Specific Conductivity	NST	641	µS/cm
Total Coliforms	NST	30,000	col/100 mL

\* - Reported in mg/L and µg/L. The units mg/L and µg/L are equal to ppm and ppb, respectively.

">" - Not Identified Above the Upper Detection Limit

"<" - Not Identified Below the Lower Detection Limit

J - Positively Identified Below the Lower Detection Limit

NST - No Sample Taken

U - Undetected